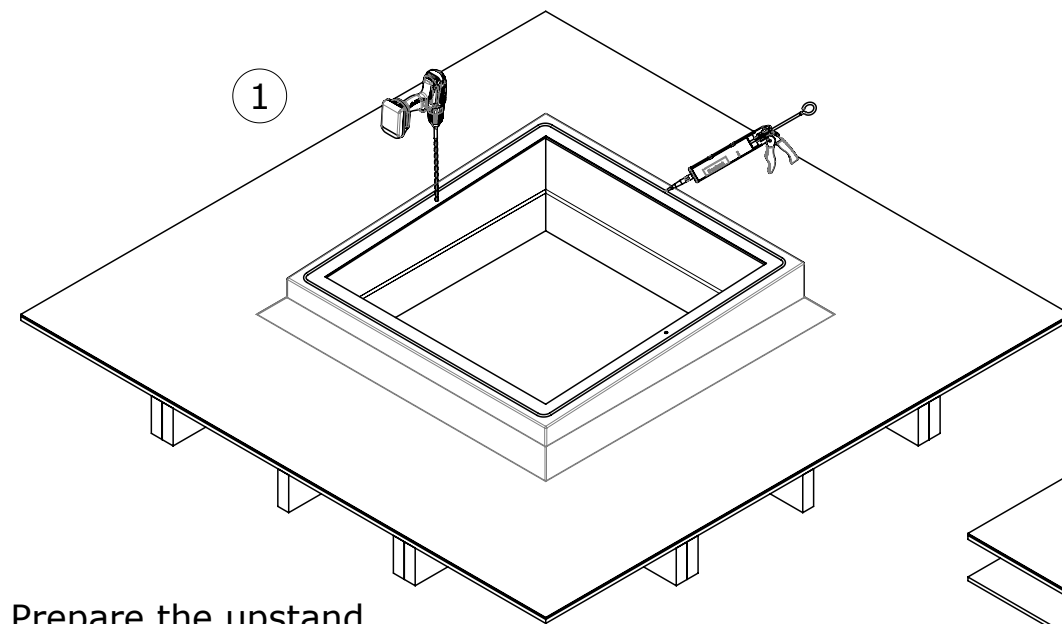
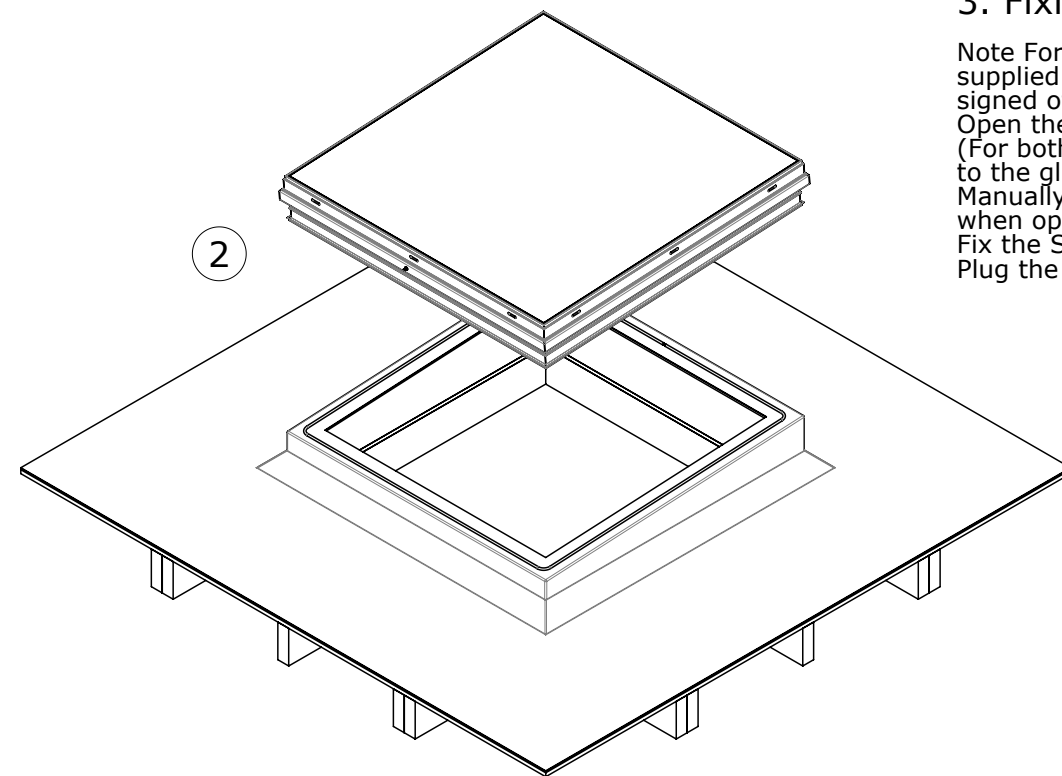


Please note that this diagram shows the Electric Opening Rooflight, but is also applicable to the manual version.



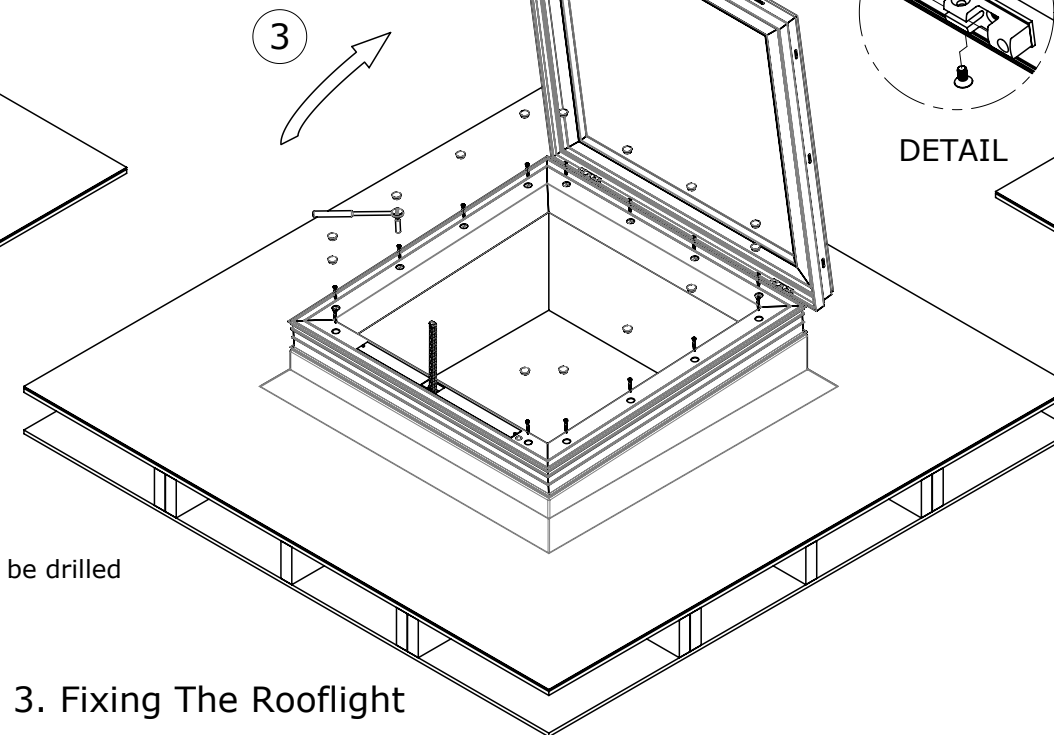
## 1. Prepare the upstand

It is important to check your upstand for any excess roofing felts/treatments or screws/nails so that the upstand is clean and flat for fixing.  
Note: Firstly, For the electric versions of opening Rooflights, Holes will need to be drilled through the upstand for the cabling.  
Apply a generous bead of compatible sealant (approx 8mm) centrally around the full perimeter of the upstand.



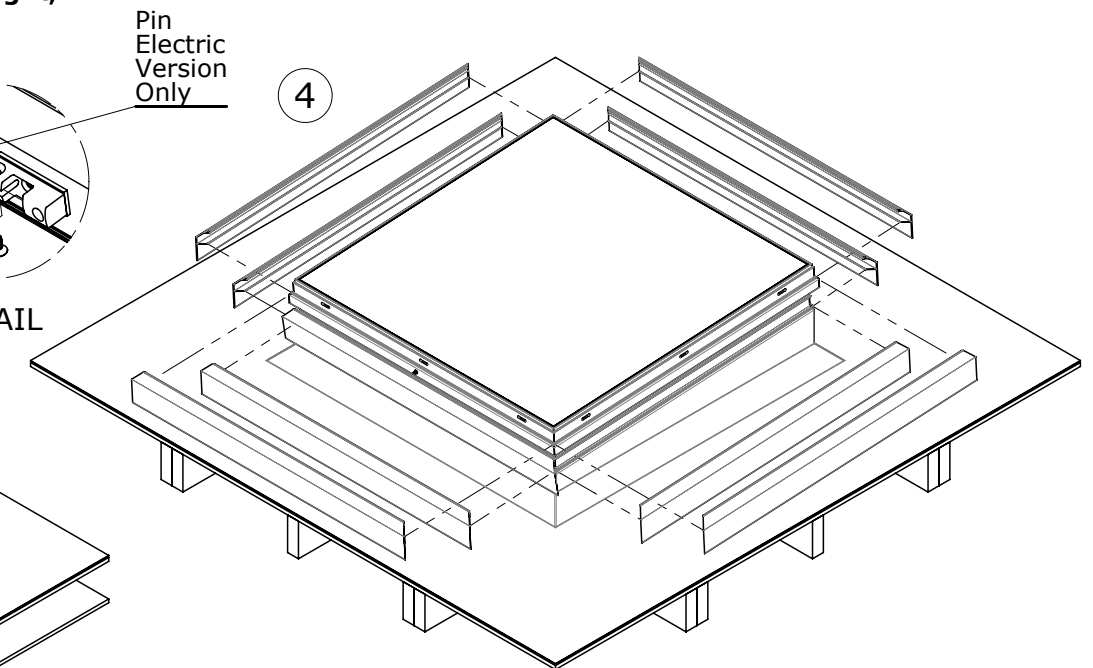
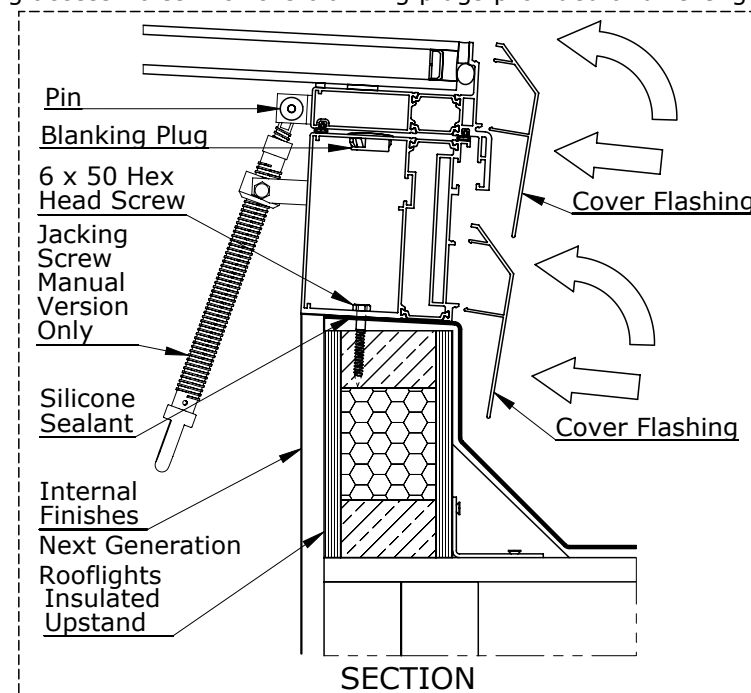
## 2. Position the Rooflight

If the Rooflight is an electric version thread the cabling through the holes in the upstand and lift the Skylight into position whilst pulling through the slack cabling until the pre-applied silicone has been compressed. (take care not to trap your fingers!) Centralise the skylight around the upstand.



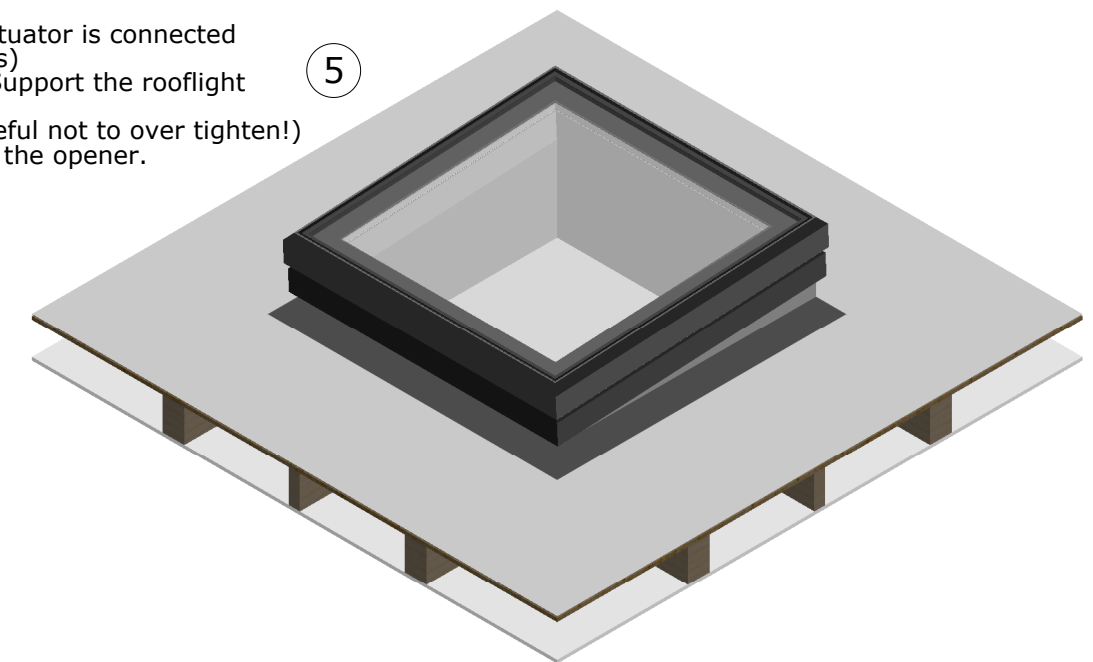
## 3. Fixing The Rooflight

Note For electric versions provide power to the rooflight following the wiring diagram, supplied separately. (This can be temporary for fixing purposes, although they must be signed off by a qualified electrician)  
Open the rooflight and disengage the glazed frame from the opener.  
(For both manual and electric versions the jacking screw or electric chain actuator is connected to the glazed frame via a metal pin shown in the DETAIL and SECTION views)  
Manually open the glazed unit revealing the fixing positions (IMPORTANT - Support the rooflight when opening to prevent the unit from moving or tipping).  
Fix the Skylight by using the 6 x 50 hexagon head screws provided. (Be careful not to over tighten!)  
Plug the fixing access holes with the blanking plugs provided and re-engage the opener.



## 4. Attach the cover flashings.

Close the Rooflight and attach the cover flashings by inserting in a rotating motion.  
See SECTION detail.  
If necessary use a soft mallet to align the corners.



## 5. The rooflight is now installed

It is important to remove any protective films from the unit as the sunlight can react with the adhesives on the film and leave behind a residue that is difficult to remove.  
The internal finishes can be completed.  
See the SECTION detail for the standard and optional plaster finishes.

**NEXT GENERATION ROOFLIGHTS**  
Queens Business Park  
Wilbraham Road  
Fulbourn  
Cambridge  
CB21 5GT  
T: 01223 792 224  
E: sales@nextgenrooflights.co.uk  
info@nextgenrooflights.co.uk  
W: nextgenrooflights.co.uk



### Important information. Please read and study the instructions before starting the installation.

Please ensure that the Skylight has been checked before moving it to the roof. It is important that any visible defects or problems are reported to NEXT GENERATION ROOFLIGHTS via telephone on 01245 392108. When lifting the rooflight please take into account the weight and the number of people required to safely handle the load. Plan ahead, clear the route of any obstructions and advise any site workers of when the installation is to commence. The correct way to lift the rooflight is to support the frame at quarter points keeping the rooflight flat wherever possible. Avoid sliding the rooflight over any surface (even wrapped) doing so could damage the unit. Whilst every effort has been made to ensure the accuracy of this diagram Vision AGI cannot be responsible for any loss, injury or expense resulting from errors or omissions. Rooflights should be installed by a competent person in full compliance with the relevant building regulations, good practice and applicable codes whilst adhering to any architects/engineers specific/approved design details. **Installation can now begin...**

Next Generation Rooflights is a trading name of Vision AGI Limited, Company No. 08429446, Registered Office: 1 Vicarage Lane, Stratford, London, E15 4HF

Drawing No.: VR-ORI-01